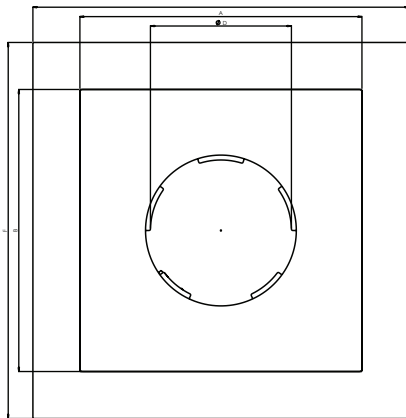
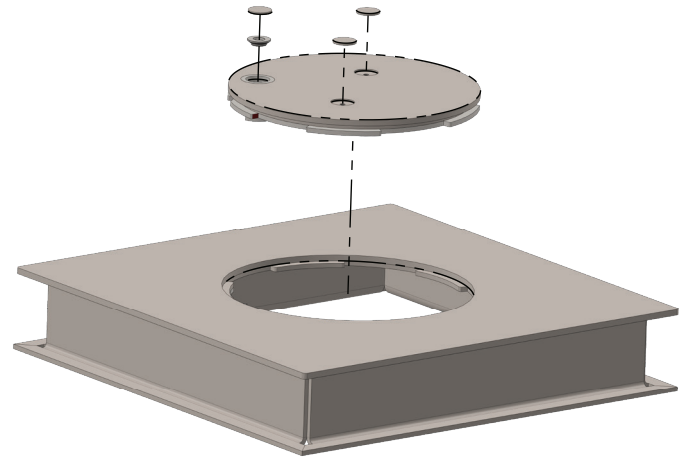


MONITORING COVERS

Our Borehole Monitoring Covers are designed to protect equipment against Theft and Vandalism.

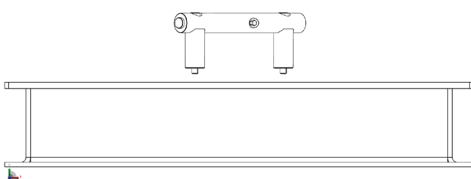


Our covers are manufactured from 4mm - 10mm Mild Steel to Stainless Steel options. These Covers offers a astetically flush design with the top lid interlocking into the base with minimum gaps to deter unwanted entry. A tamper-proof locking system is used, with a hidden keyhole compartment for secure access. The cover is opened with a custom handle bar to allow access to the lock . The internal locking system can be ordered to work with a

mechanical lock or with an electronic locking system which is expandable to integrate into a remote national or global security network, giving full and real-time digital customizable access control. The unit is designed to be set into concrete. Our covers offers easy and secure manageable access control.

Features

- Vandal Resistant
- Anti -Corrosion Coated
- Internal Locking Systems
- Manageable access control
- Weatherproof



Designation	Description	Dimension (mm)
A	External	600
B	External	600
C	External	108
D	Opening	300
E	Concrete Minimum	800
F	Concrete Minimum	800
G	Concrete Minimum	180